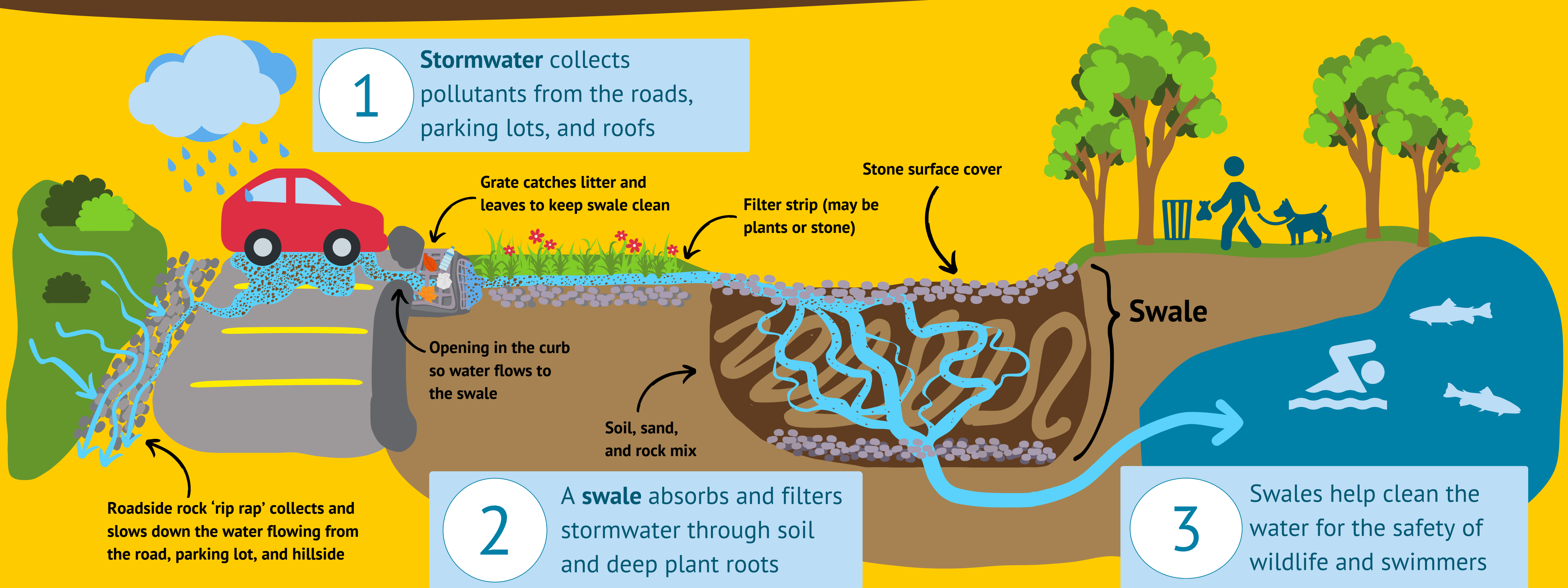


# MANAGING STORMWATER

## AT CHATFIELD HOLLOW STATE PARK



After a heavy rain, **stormwater** flows across **impervious surfaces** such as sidewalks, roads, parking lots, and roofs into the nearest river, pond, or other waterbody. The stormwater brings with it all the pollutants it picked up along its journey such as **bacteria, sand, soil, litter,** and **nutrients** that can cause algae blooms.

A **swale** is a form of **green stormwater infrastructure** designed to capture and soak up stormwater **runoff**, which helps to remove pollutants before the stormwater can flow into the nearest waterbody. The swales at Chatfield Hollow use layers of soil, sand, and rock to create a natural **filter** to capture larger pollutants while the roots of nearby plants take up smaller pollutants.

You may see some of the green infrastructure features shown on this sign at Chatfield Hollow to capture and filter stormwater before it reaches **Schreeder Pond**. This contributes to cleaner and safer water for swimming, fishing, and other forms of recreating! Help keep our park clean and enjoy its natural beauty - pick up after your pet and throw pet waste bags in the trash. You can install your own swale or rain garden at home to help your local water health, too!



*This project has been funded, in whole or in part, by the U.S. Environmental Protection Agency Long Island Sound Study (LISS), administered by the Connecticut Department of Energy and Environmental Protection.*