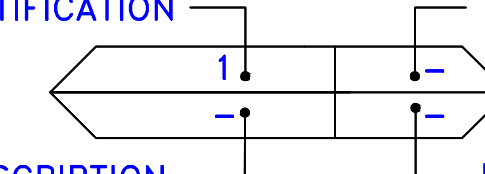


**SAMPLE LEGEND**

SAMPLE IDENTIFICATION      SAMPLE RESULT



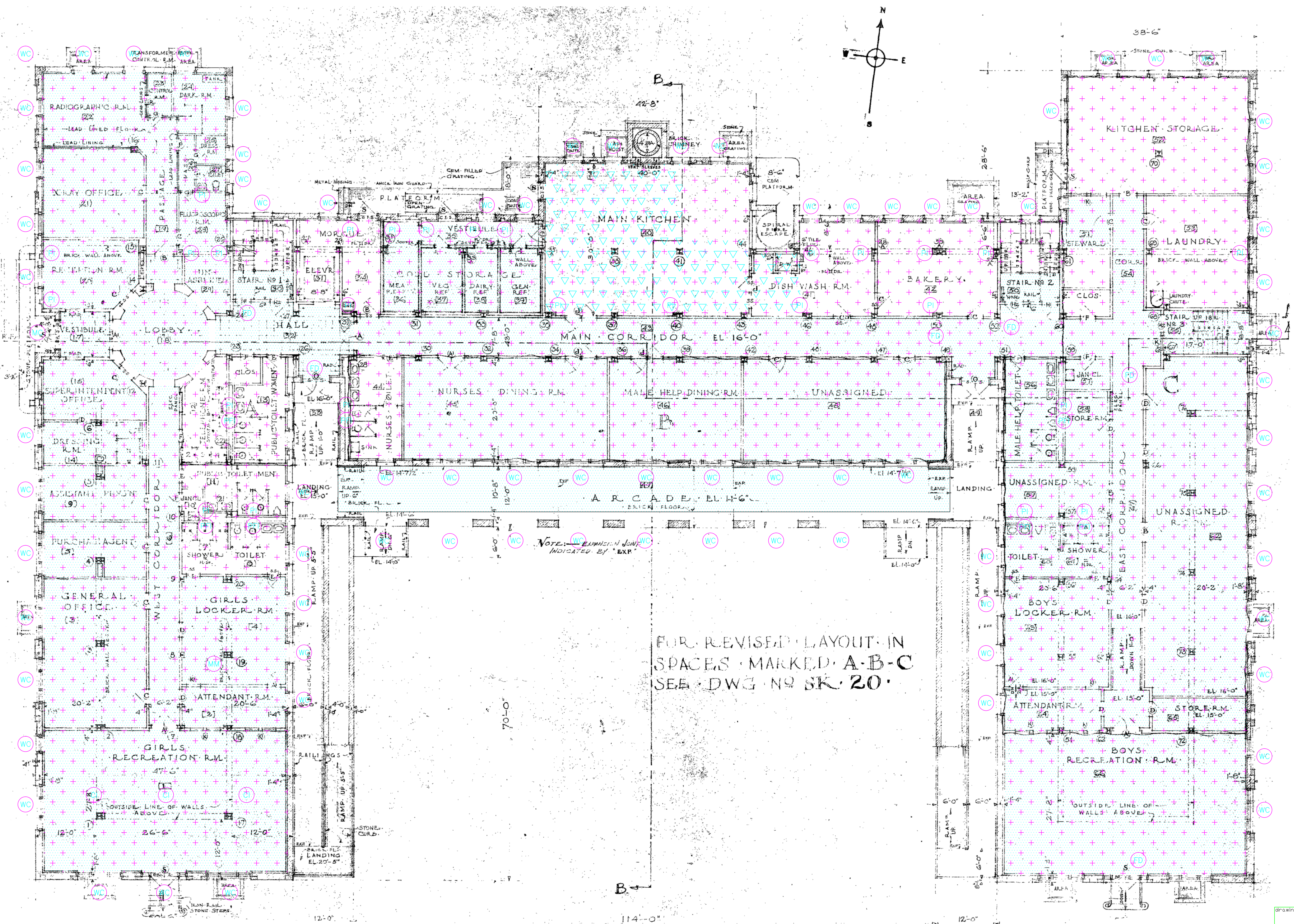
MATERIAL DESCRIPTION      PERCENTAGE AND TYPE OF ASBESTOS

- AM = AMOSITE
- CA = CARPET ADHESIVE
- CB = COVE BASE
- CBA = COVE BASE ADHESIVE
- CFTA = CERAMIC FLOOR TILE ADHESIVE
- CFTG = CERAMIC FLOOR TILE GROUT
- CFTSC = CERAMIC FLOOR TILE SETTING COMPOUND
- CH = CHRYSOTILE
- CO = COUNTERTOP
- CT = CEILING TILE
- CWTA = CERAMIC WALL TILE ADHESIVE
- CWTG = CERAMIC WALL TILE GROUT
- CWTSC = CERAMIC WALL TILE SETTING COMPOUND
- DC = DOOR CAULKING
- DG = DOOR GLAZING
- DI = DUCT INSULATION
- DIA = DUCT INSULATION ADHESIVE
- DIW = DUCT INSULATION WRAP
- DS = DUCT SEALANT
- ECP = END CAP PACKING
- ECS = END CAP SEALANT
- EFIS = EXTERIOR FINISH INSULATION SYSTEM
- EJF = EXPANSION JOINT FILLER
- FC = FLEX CONNECTOR
- FP = SPRAY-ON FIREPROOFING
- FT = FLOOR TILE
- FTM = FLOOR TILE MASTIC
- GB = GYPSUM BOARD
- GD = GLUE DAUB
- JC = JOINT COMPOUND
- LI = LINOLEUM
- LIA = LINOLEUM ADHESIVE
- LV = LEVELING COMPOUND
- MA = MISCELLANEOUS ADHESIVE
- MC = MISCELLANEOUS CAULKING
- MM = MISCELLANEOUS MATERIAL
- N = NEGATIVE
- NA = NOT ANALYZED
- NAD = NO ASBESTOS DETECTED
- NAPS = NOT ANALYZED POSITIVE STOP
- P = POSITIVE
- PFI = PIPE FITTING INSULATION
- PI = PIPE INSULATION
- PIA = PIPE INSULATION ADHESIVE
- PLCB = PLASTER CEILING BASE COAT
- PLCS = PLASTER CEILING SKIM COAT
- PLWB = PLASTER WALL BASE COAT
- PLWS = PLASTER WALL SKIM COAT
- PW = PIPE MASTIC
- PS = PENETRATION SEALANT
- PW = PIPE WRAP
- RC = ROOF CEMENT
- RF = ROOF FLASHING
- RP = ROOF PAPER
- SCT = SUSPENDED CEILING TILE
- SS = SINK SEALANT
- SU = SINK UNDERCOAT
- T = TRANSITE
- TC = TEXTURED COATING
- TR = TRACE
- VW = VALVE WRAP
- WC = WINDOW CAULKING
- WG = WINDOW GLAZING
- WP = WATERPROOFING
- WT = WALL TILE

SYMBOL	MATERIAL DESCRIPTION
	ACM FLOOR TILE AND MASTIC
	ACM SHEET FLOORING AND MASTIC
	ACM PLASTER
	ACM CEILING TILE
	ACM ROOFING
	ACM FIRE DOOR LIGHT GLAZING
	ACM CEILING INSULATION
	ACM SINK UNDERCOAT
	ACM PIPE INSULATION
	ACM PIPE FITTING INSULATION
	ACM BREACHING INSULATION
	ACM TANK INSULATION
	ACM BOILER INSULATION
	ACM WINDOW CAULK AND/OR GLAZING
	ACM MISCELLANEOUS CAULK
	ACM MISCELLANEOUS MATERIAL

**NOTES**

1. NOT ALL SYMBOLS IN THE LEGEND ARE USED IN THIS DRAWING.



FOR REVISED LAYOUT IN SPACES MARKED A-B-C SEE DWG NO SK-20

drawing title <b>ACM LOCATIONS GROUND FLOOR PLAN</b>		STATE OF CONNECTICUT DEPARTMENT OF ADMINISTRATIVE SERVICES DIVISION OF CONSTRUCTION SERVICES	
REVISIONS		DRAWING PREPARED BY <b>Cardno ATC</b>	
mark	date	description	date 12/24/14 scale 1/4" = 1'
			drawn by BLS approved by EF drawing no.
project BUILDING INSPECTION MAIN HOSPITAL BUILDING SEASIDE REGIONAL CENTER WATERFORD, CONNECTICUT		project no. 61.22573.0020 TASK 20068	
CAD no.		ASB-2	