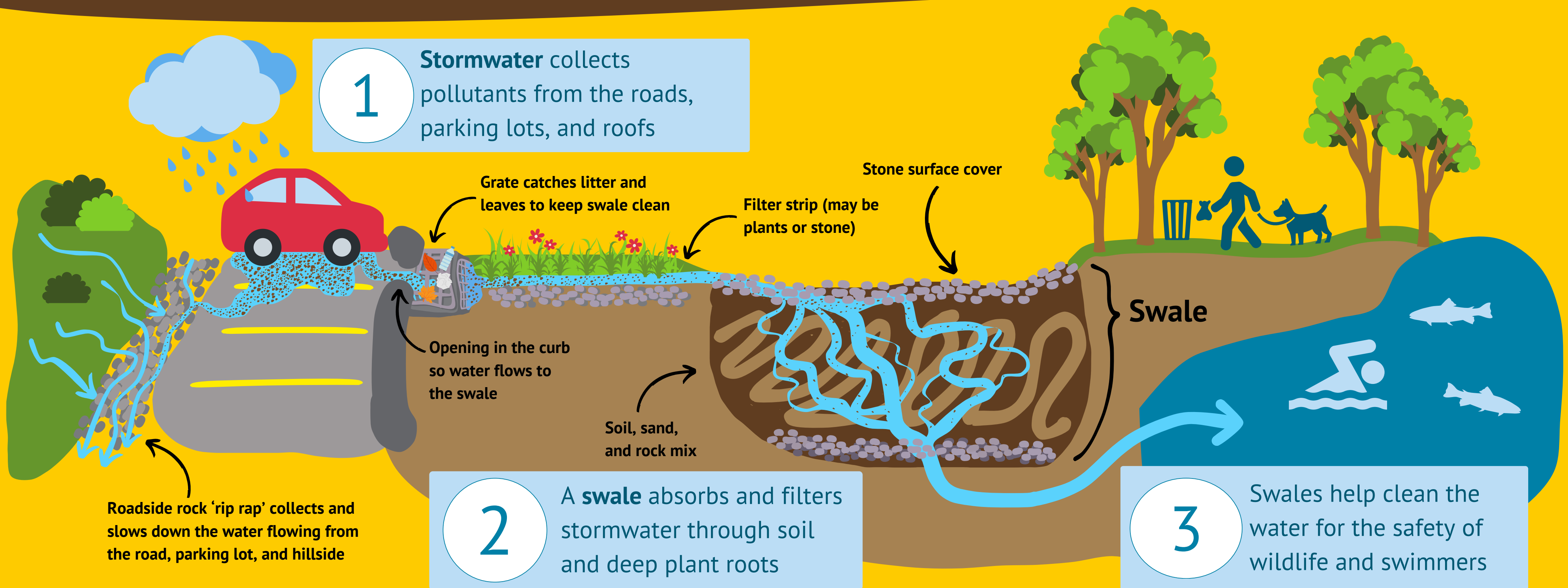


# MANAGING STORMWATER

## AT CHATFIELD HOLLOW STATE PARK



After a heavy rain, **stormwater** flows across **impervious surfaces** such as sidewalks, roads, parking lots, and roofs into the nearest river, pond, or other waterbody. The stormwater brings with it all the pollutants it picked up along its journey such as **bacteria, sand, soil, litter,** and **nutrients** that can cause algae blooms.

A **swale** is a form of **green stormwater infrastructure** designed to capture and soak up stormwater **runoff**, which helps to remove pollutants before the stormwater can flow into the nearest waterbody. The swales at Chatfield Hollow use layers of soil, sand, and rock to create a natural **filter** to capture larger pollutants while the roots of nearby plants take up smaller pollutants.

You may see some of the green infrastructure features shown on this sign at Chatfield Hollow to capture and filter stormwater before it reaches **Schreeder Pond**. This contributes to cleaner and safer water for swimming, fishing, and other forms of recreating! Help keep our park clean and enjoy its natural beauty - pick up after your pet and throw pet waste bags in the trash. You can install your own swale or rain garden at home to help your local water health, too!



*This project has been funded, in whole or in part, by the U.S. Environmental Protection Agency Long Island Sound Study (LISS), administered by the Connecticut Department of Energy and Environmental Protection.*

# GESTIÓN DE AGUAS PLUVIALES

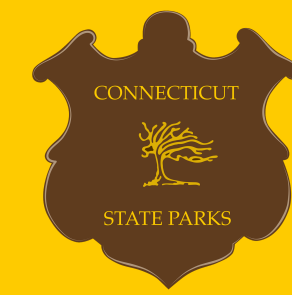
## EN EL PARQUE ESTATAL CHATFIELD HOLLOW



Después de una lluvia intensa, **el agua de lluvia** fluye a través de superficies impermeables como aceras, caminos, estacionamientos y techos hasta el río, estanque u otro cuerpo de agua. Las aguas pluviales traen consigo todos los contaminantes que han recogidos a lo largo de su viaje, como bacterias, arena, tierra, basura y nutrientes que pueden provocar la proliferación de algas.

Una **área de infiltración** es una forma de **infraestructura verde** para aguas pluviales diseñada para capturar y absorber el **escape de aguas pluviales**, lo que ayuda a eliminar contaminantes antes de que las aguas pluviales puedan fluir hacia el cuerpo de agua más cercano. Las áreas de infiltración de Chatfield Hollow utilizan capas de tierra, arena y roca para crear un **filtro natural** para capturar los contaminantes más grandes mientras que las raíces de las plantas cercanas absorben los contaminantes más pequeños.

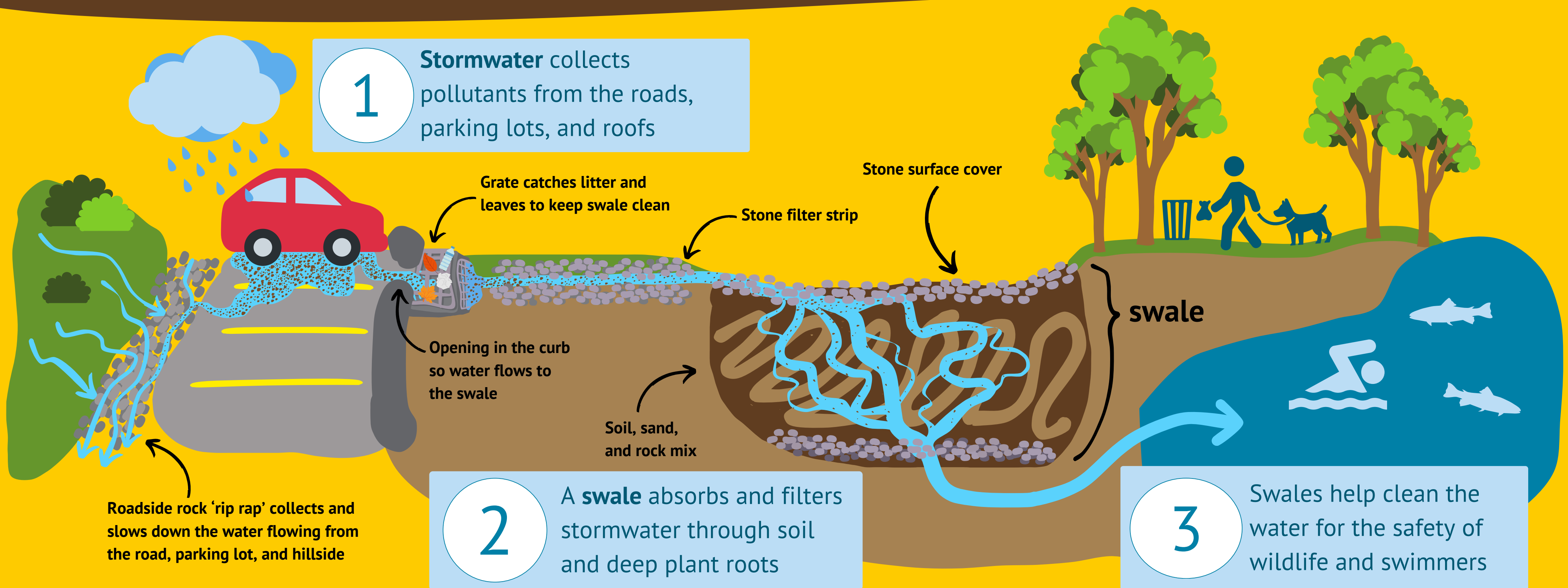
Es posible que vea algunas de las características de infraestructura verde identificadas en este letrero en Chatfield Hollow. Estas capturan y filtran aguas pluviales antes de que lleguen a **Schreeder Pond**. ¡Esto contribuye a tener un agua más limpia y segura para poder nadar, pescar, y disfrutar de otras formas de recreación! Ayúdenos a mantener nuestro parque limpio y disfrute de su belleza natural: recoja los excrementos de su mascota y arroje las bolsas de excrementos a la basura. ¡Usted también puede instalar su propio jardín de lluvia o áreas de infiltración en casa para ayudar a la calidad del agua local!



*Este proyecto ha sido financiado, total o parcialmente, por el Estudio del estrecho de Long Island (LISS por sus siglas en inglés) de la Agencia de Protección Ambiental de los Estados Unidos, administrado por el Departamento de Energía y Protección Ambiental de Connecticut.*

# MANAGING STORMWATER

## AT CHATFIELD HOLLOW STATE PARK



After a heavy rain, **stormwater** flows across **impervious surfaces** such as sidewalks, roads, parking lots, and roofs into the nearest river, pond, or other waterbody. The stormwater brings with it all the pollutants it picked up along its journey such as **bacteria, sand, soil, litter,** and **nutrients** that can cause algae blooms.

A **swale** is a form of **green stormwater infrastructure** designed to capture and soak up stormwater **runoff**, which helps to remove pollutants before the stormwater can flow into the nearest waterbody. The swales at Chatfield Hollow use layers of soil, sand, and rock to create a natural **filter** to capture larger pollutants while the roots of nearby plants take up smaller pollutants.

You may see some of the green infrastructure features shown on this sign at Chatfield Hollow to capture and filter stormwater before it reaches **Schreeder Pond**. This contributes to cleaner and safer water for swimming, fishing, and other forms of recreating! Help keep our park clean and enjoy its natural beauty - pick up after your pet and throw pet waste bags in the trash. You can install your own swale or rain garden at home to help your local water health, too!

Para esta información en español, escanea el código QR con su teléfono celular:

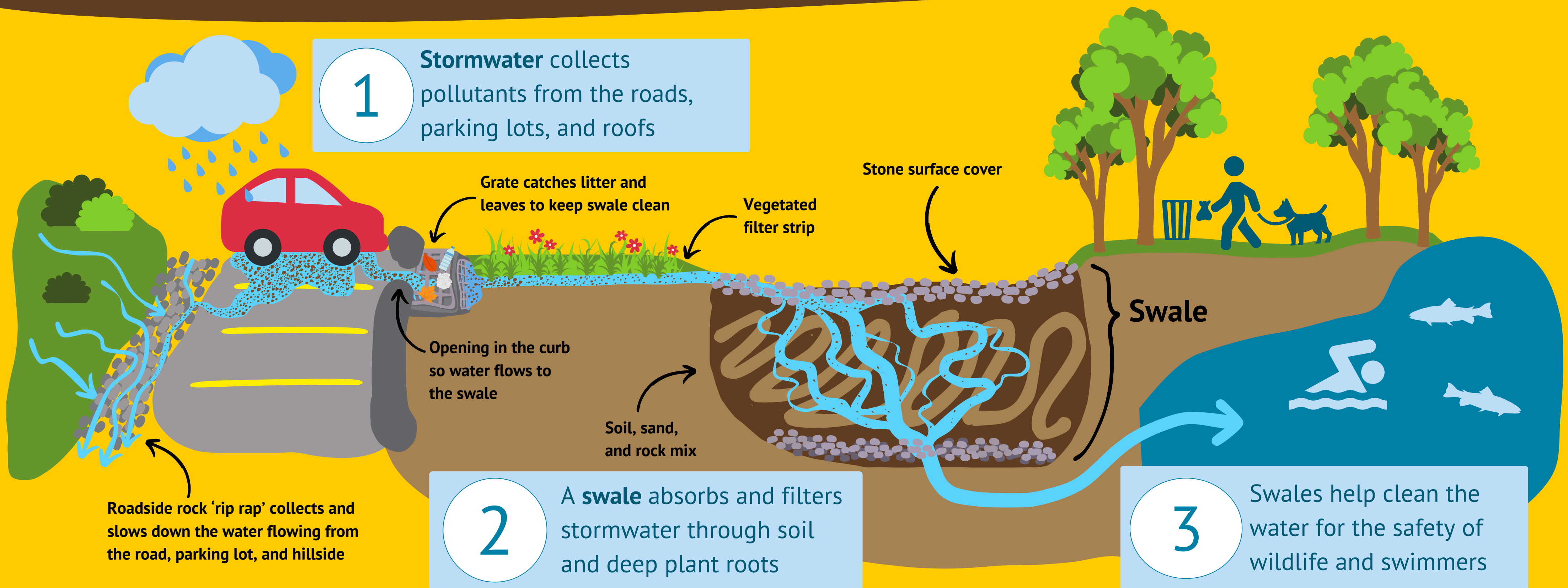
QR code



This project has been funded, in whole or in part, by the U.S. Environmental Protection Agency Long Island Sound Study (LISS), administered by the Connecticut Department of Energy and Environmental Protection.

# MANAGING STORMWATER

## AT CHATFIELD HOLLOW STATE PARK



After a heavy rain, **stormwater** flows across **impervious surfaces** such as sidewalks, roads, parking lots, and roofs into the nearest river, pond, or other waterbody. The stormwater brings with it all the pollutants it picked up along its journey such as **bacteria, sand, soil, litter,** and **nutrients** that can cause algae blooms.

A **swale** is a form of **green stormwater infrastructure** designed to capture and soak up stormwater **runoff**, which helps to remove pollutants before the stormwater can flow into the nearest waterbody. The swales at Chatfield Hollow use layers of soil, sand, and rock to create a natural **filter** to capture larger pollutants while the roots of nearby plants take up smaller pollutants.

You may see some of the green infrastructure features shown on this sign at Chatfield Hollow to capture and filter stormwater before it reaches **Schreeder Pond**. This contributes to cleaner and safer water for swimming, fishing, and other forms of recreating! Help keep our park clean and enjoy its natural beauty - pick up after your pet and throw pet waste bags in the trash. You can install your own swale or rain garden at home to help your local water health, too!

Para esta información en español, escanea el código QR con su teléfono celular:



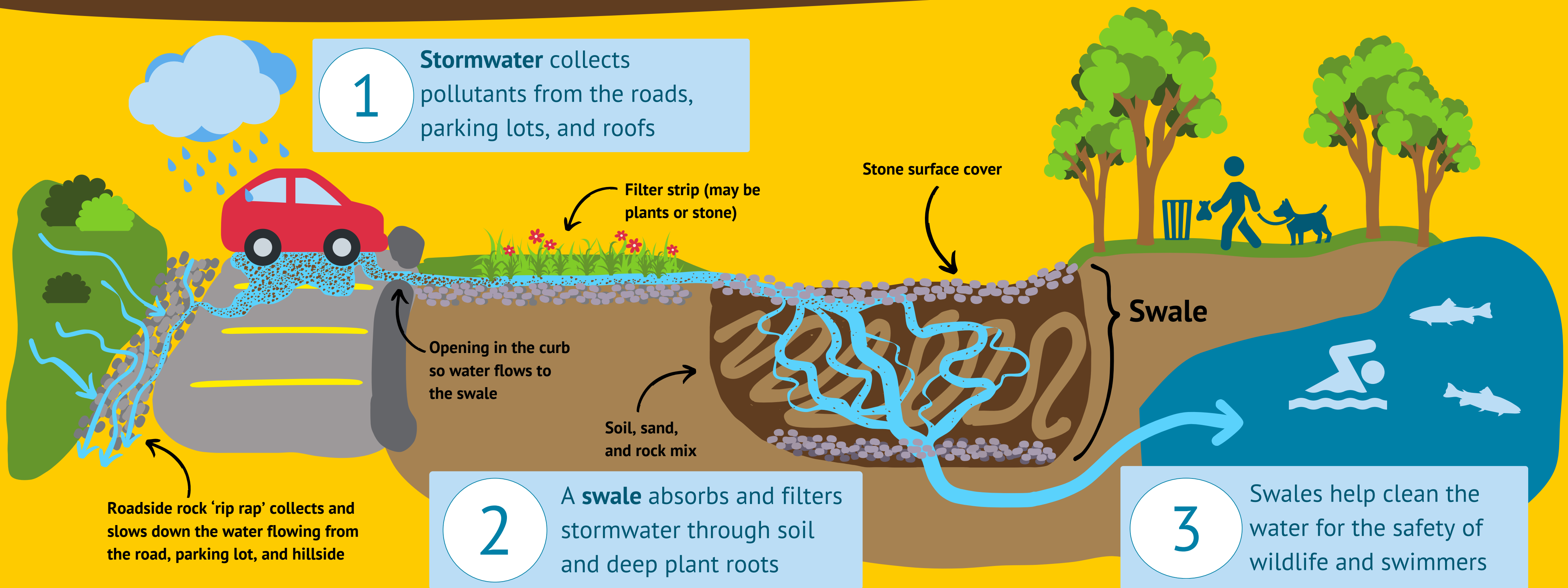
QR code



This project has been funded, in whole or in part, by the U.S. Environmental Protection Agency Long Island Sound Study (LISS), administered by the Connecticut Department of Energy and Environmental Protection.

# MANAGING STORMWATER

## AT CHATFIELD HOLLOW STATE PARK



After a heavy rain, **stormwater** flows across **impervious surfaces** such as sidewalks, roads, parking lots, and roofs into the nearest river, pond, or other waterbody. The stormwater brings with it all the pollutants it picked up along its journey such as **bacteria, sand, soil, litter,** and **nutrients** that can cause algae blooms.

A **swale** is a form of **green stormwater infrastructure** designed to capture and soak up stormwater **runoff**, which helps to remove pollutants before the stormwater can flow into the nearest waterbody. The swales at Chatfield Hollow use layers of soil, sand, and rock to create a natural **filter** to capture larger pollutants while the roots of nearby plants take up smaller pollutants.

You may see some of the green infrastructure features shown on this sign at Chatfield Hollow to capture and filter stormwater before it reaches **Schreeder Pond**. This contributes to cleaner and safer water for swimming, fishing, and other forms of recreating! Help keep our park clean and enjoy its natural beauty - pick up after your pet and throw pet waste bags in the trash. You can install your own swale or rain garden at home to help your local water health, too!

Para esta información en español, escanea el código QR con su teléfono celular:

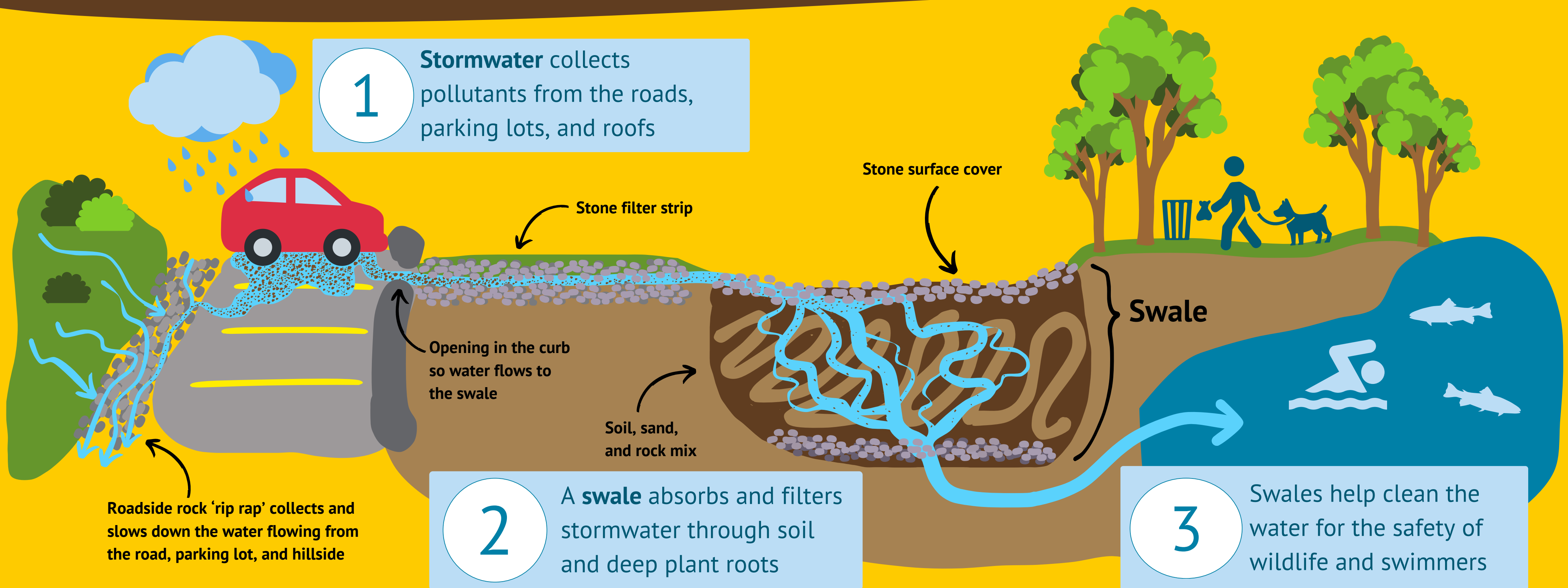
QR code



This project has been funded, in whole or in part, by the U.S. Environmental Protection Agency Long Island Sound Study (LISS), administered by the Connecticut Department of Energy and Environmental Protection.

# MANAGING STORMWATER

## AT CHATFIELD HOLLOW STATE PARK

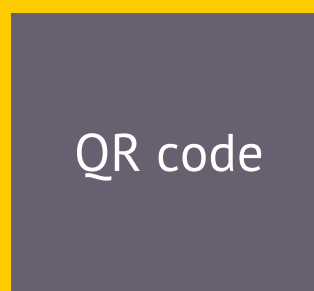


After a heavy rain, **stormwater** flows across **impervious surfaces** such as sidewalks, roads, parking lots, and roofs into the nearest river, pond, or other waterbody. The stormwater brings with it all the pollutants it picked up along its journey such as **bacteria, sand, soil, litter,** and **nutrients** that can cause algae blooms.

A **swale** is a form of **green stormwater infrastructure** designed to capture and soak up stormwater **runoff**, which helps to remove pollutants before the stormwater can flow into the nearest waterbody. The swales at Chatfield Hollow use layers of soil, sand, and rock to create a natural **filter** to capture larger pollutants while the roots of nearby plants take up smaller pollutants.

You may see some of the green infrastructure features shown on this sign at Chatfield Hollow to capture and filter stormwater before it reaches **Schreeder Pond**. This contributes to cleaner and safer water for swimming, fishing, and other forms of recreating! Help keep our park clean and enjoy its natural beauty - pick up after your pet and throw pet waste bags in the trash. You can install your own swale or rain garden at home to help your local water health, too!

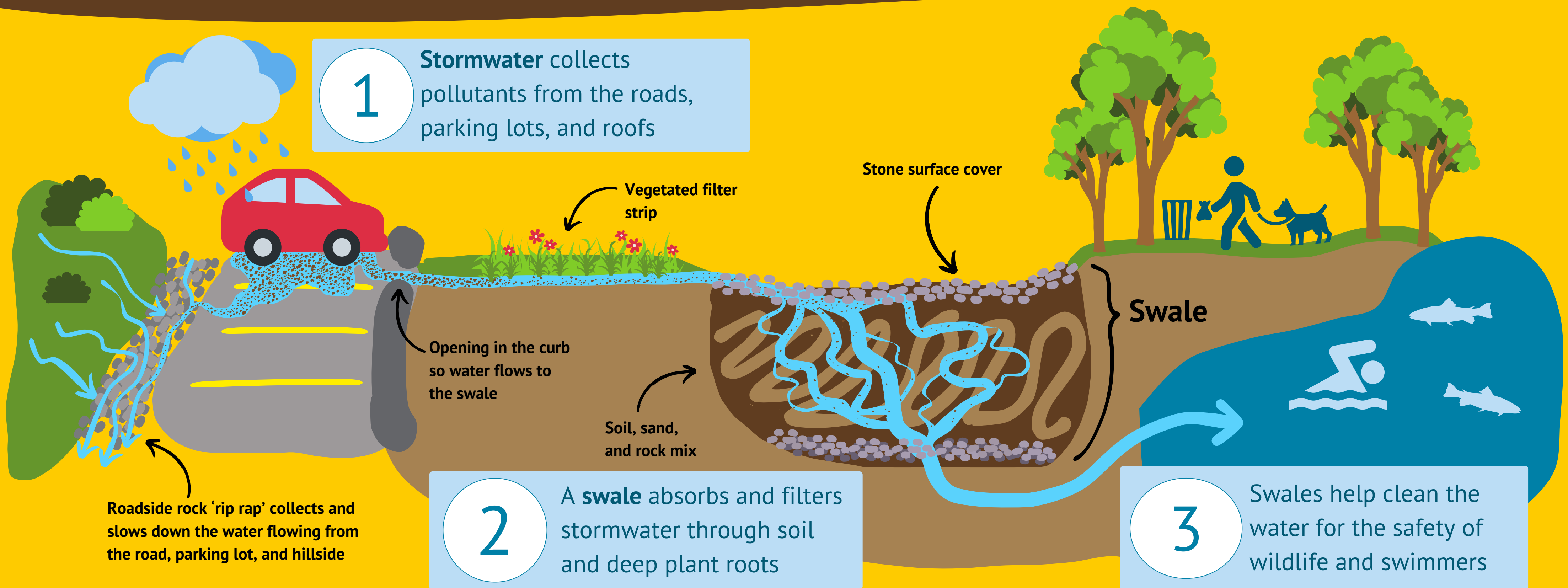
Para esta información en español, escanea el código QR con su teléfono celular:



This project has been funded, in whole or in part, by the U.S. Environmental Protection Agency Long Island Sound Study (LISS), administered by the Connecticut Department of Energy and Environmental Protection.

# MANAGING STORMWATER

## AT CHATFIELD HOLLOW STATE PARK



After a heavy rain, **stormwater** flows across **impervious surfaces** such as sidewalks, roads, parking lots, and roofs into the nearest river, pond, or other waterbody. The stormwater brings with it all the pollutants it picked up along its journey such as **bacteria, sand, soil, litter,** and **nutrients** that can cause algae blooms.

A **swale** is a form of **green stormwater infrastructure** designed to capture and soak up stormwater **runoff**, which helps to remove pollutants before the stormwater can flow into the nearest waterbody. The swales at Chatfield Hollow use layers of soil, sand, and rock to create a natural **filter** to capture larger pollutants while the roots of nearby plants take up smaller pollutants.

You may see some of the green infrastructure features shown on this sign at Chatfield Hollow to capture and filter stormwater before it reaches **Schreeder Pond**. This contributes to cleaner and safer water for swimming, fishing, and other forms of recreating! Help keep our park clean and enjoy its natural beauty - pick up after your pet and throw pet waste bags in the trash. You can install your own swale or rain garden at home to help your local water health, too!

Para esta información en español, escanea el código QR con su teléfono celular:

QR code



This project has been funded, in whole or in part, by the U.S. Environmental Protection Agency Long Island Sound Study (LISS), administered by the Connecticut Department of Energy and Environmental Protection.