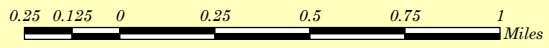


Centennial Watershed State Forest Aspetuck Trail Newtown, Redding & Easton Connecticut



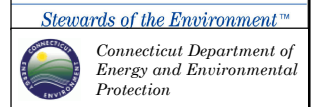
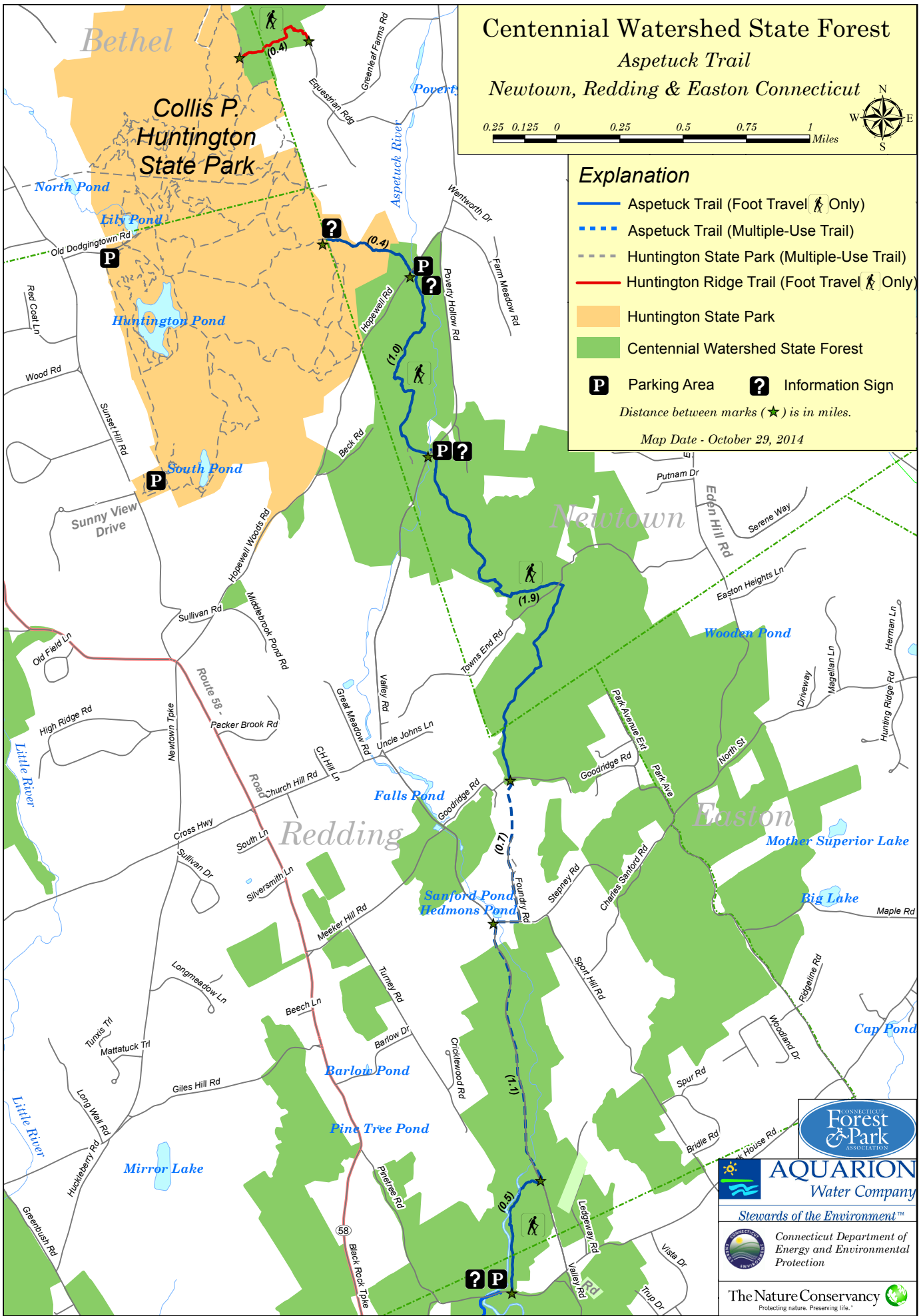
Explanation

- Aspetuck Trail (Foot Travel Only)
- Aspetuck Trail (Multiple-Use Trail)
- Huntington State Park (Multiple-Use Trail)
- Huntington Ridge Trail (Foot Travel Only)
- Huntington State Park
- Centennial Watershed State Forest

- Parking Area
- Information Sign

Distance between marks (★) is in miles.

Map Date - October 29, 2014



Aspetuck Trail Rules

A copy of the trail map is considered your hiking permit. You or an individual in your group must carry it with you at all times while on the trail.

The Aspetuck Trail is for foot travel only, and is open year round from sunrise to sunset. The trail is marked with blue blazes. Hikers are required to stay on the marked trail.

Jogging, cross-country skiing and snowshoeing are also permitted.

An adult permit holder must accompany hikers under the age of 14.

Fishing, swimming, wading, camping, campfires, rock climbing, smoking, and alcoholic beverages are not permitted.

Canoes, kayaks or any other boat or flotation devices are not permitted on any stream, river or watercourse within the Stat Forest.

Pets are not allowed on the trail to protect wildlife and vegetation and to comply with the Department of Public Health regulations. Equestrian use is also prohibited.

Vehicles of any kind, motorized or not, including all types of cycles, are prohibited on the Aspetuck Trail.

Please do not disturb or remove vegetation, animals or minerals, so those who follow you can enjoy them.

Park only in designated, parking areas when hiking the trail.

To report unauthorized use, please call:

Aquarion Water Company at (203) 452-3511, or

CT DEEP Dispatch and Law Enforcement at (860) 424-3333